

THE RAY CHARLES TERRACE

ON THE ROOFTOP OF THE GRAMMY MUSEUM®

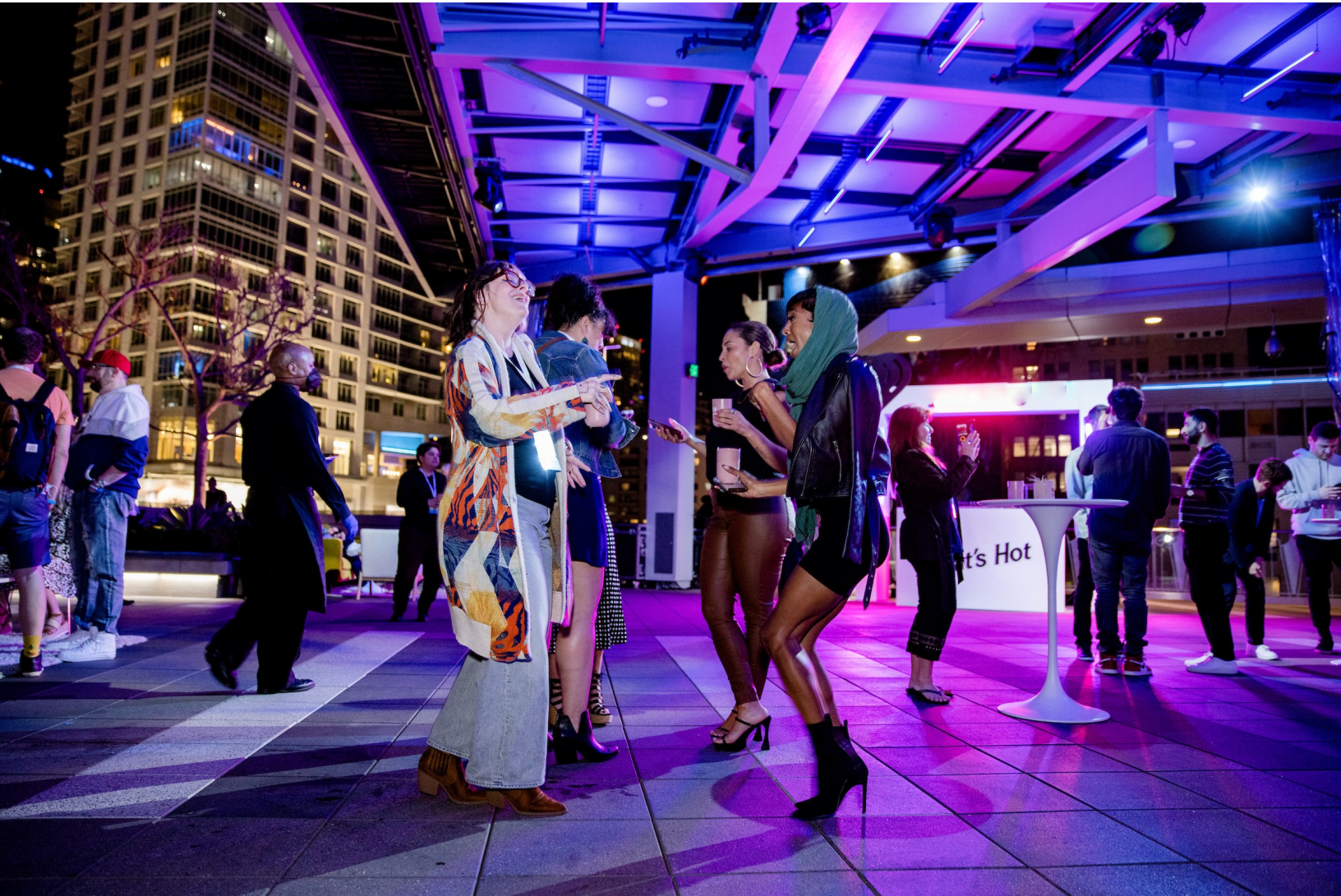


EVENT PROPOSAL



www.GRAMMYmuseum.org/contact/host-an-event/

THE CITY IS YOUR BACKDROP



This unique venue is known for our view, our experienced live events staff, and our convenient location in Downtown L.A. Perched on the rooftop of the GRAMMY Museum® at L.A. LIVE, The Ray Charles Terrace boasts incomparable 180-degree views from Downtown L.A. to the Hollywood sign.

Centrally located just a quick walk from the Los Angeles Convention Center, Crypto.com Arena, Microsoft Theater, featured hotels, and multiple L.A. LIVE restaurants, our spacious venue can accommodate up to 400 people for standing receptions and 200 people for seated dining experiences. In addition, our flexible space can stand alone or combine with The NOVO or GRAMMY Museum® to enhance your experience!

Activations · Ceremonies · Conferences · Culinary and Beverage Events · Customer Appreciation Events
Fashion Shows · Fundraisers · Holiday Parties · Meetings
Parties and Celebrations · Product Launches · Seminars
Team Building Retreats · Trade Show · Weddings
Wrap Parties and much more!

**MEMORABLE EVENTS
DON'T JUST HAPPEN.
THEY HAPPEN TO BE
OUR BUSINESS.**

“ *Our guests were amazed with the venue, especially at night when the city lights came on. The venue speaks for itself. Look at pictures, schedule a visit... it is a no-brainer.* ”

**LET'S GET THE
PARTY STARTED**



SPECS & AMENITIES

BREATHTAKING SKYLINE VIEWS

Incomparable 180-degree views from Downtown L.A. to the Hollywood sign

8,100 SQ FT

Of flexible open space

OUTDOOR ROOFTOP

Perched above The GRAMMY Museum®

PERMANENT AWNING

Protects your event from the elements year-round

FULL-SERVICE BAR

With all the fixings

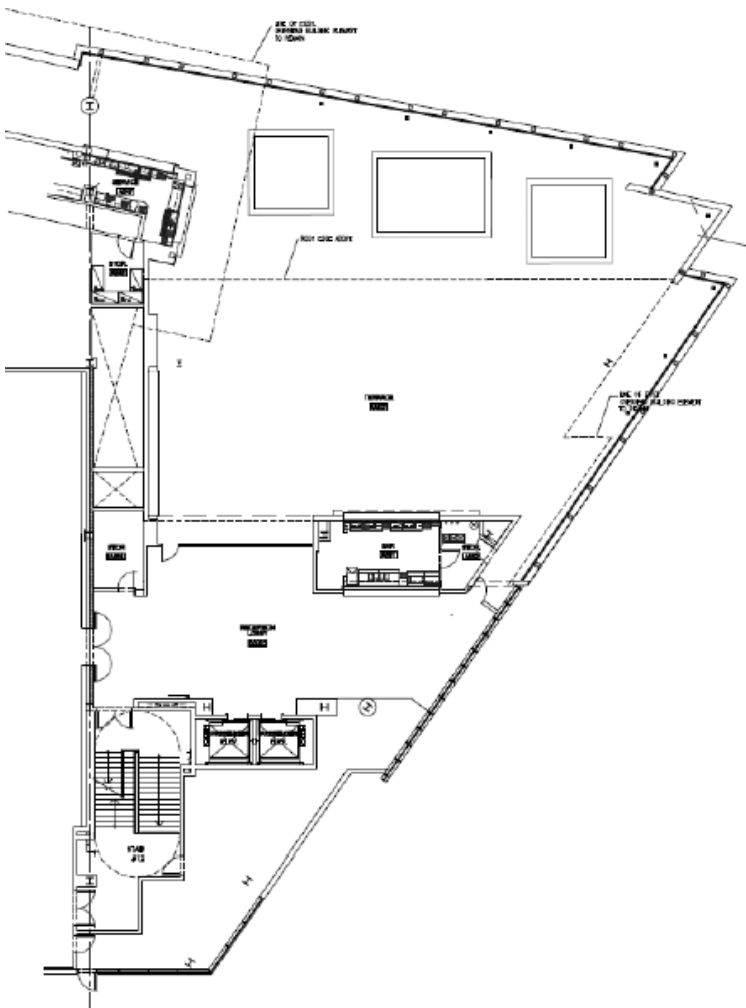
AMBIENT LIGHTING

To make any event look sensational

ADDITIONAL FEATURES

- Branding Opportunities
- Dedicated Event Manager
- Cocktail Tables & Rounds with Dark Wood Folding Chairs
- Outdoor Cushions (additional seating)
- 2 Wireless Microphones
- Acrylic Podium
- iPod with Spotify Premium for streaming music
- Built-in Speaker System with XLR plug in for performances or DJ's
- In-house Security, Engineering & Janitorial Services
- Private Restrooms

THE BEST LAYOUTS FOR YOUR EVENT



RAY CHARLES TERRACE

400

Capacity

Standing Receptions

200

Capacity

Seated Dining

175

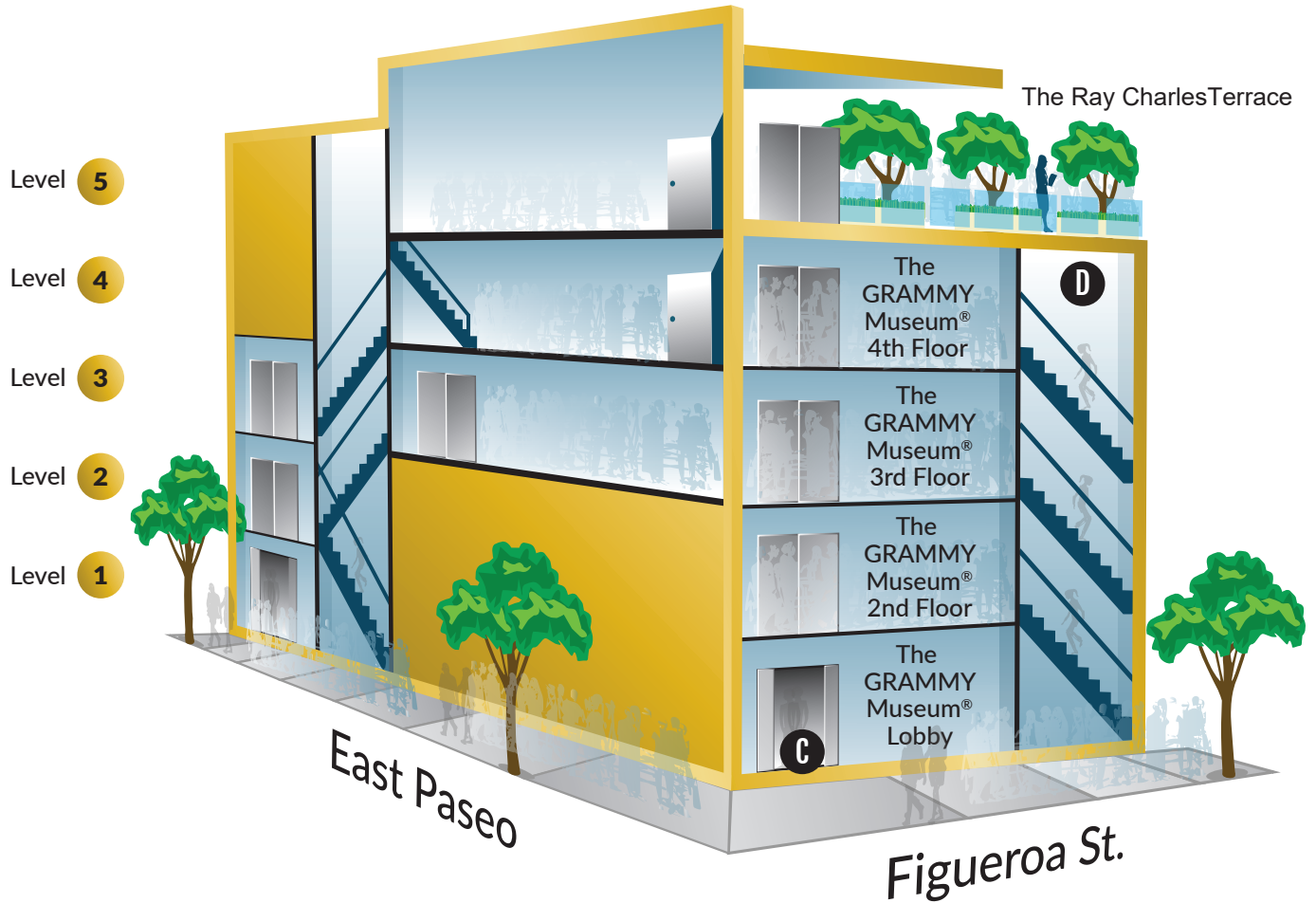
Capacity

Wedding Ceremony

We accommodate the amount of attendees you need in the most engaging way. We have traditional and inventive layouts to maximize the room capacity and experience for guests.

MAKE THE MOST OF OUR SPACE

THE RAY CHARLES TERRACE · THE GRAMMY MUSEUM®



C Two elevators go to all levels of The GRAMMY Museum® & The Ray Charles Terrace

D Stairs inside The GRAMMY Museum® connect levels 1-4



WOLFGANG PUCK CATERING PACKAGES



CUSTOMIZED MENUS & PACKAGES TO CHOOSE FROM FOR YOUR EVENT!

Wolfgang Puck Catering delivers creative seasonal cuisine and gracious, personalized hospitality in epic event settings and iconic venues. Known for bringing its world-class culinary experiences to everything from intimate dinner parties to the Oscars, and now bringing its expertise and inspiration to provide catering for your next event at The Ray Charles Terrace at the GRAMMY Museum®



WOLFGANG PUCK
CATERING

THE SECRET RECIPE FOR LEGENDARY EVENTS: **THE WOLFGANG PUCK CATERING TEAM**

“ *The wedding view was absolutely stunning on The Terrace, but my guests kept telling me how amazing the food was at my reception and cocktail party!* ”

- Julie Hao, Former Terrace Bride



RATE SHEET

DESCRIPTION OF SERVICES

| Room Rental Charges | Details | Location | Fee |
|--|--------------------------------------|---|--------------|
| 7Hour Rental | 2hr load-in, 3hr Event, 2hr load-out | Rooftop Terrace rental <u>Sunday-Thursday</u> | \$10,000.00* |
| Event Coordination Fee: <u>15% of venue rental</u> | | | \$1,500.00 |

Venue Licensing Fee includes:

**Friday & Saturday Rentals are \$12,500.00*

- Rooftop Terrace rental with VIP entrance
- A1 Audio Engineer
- Security, Janitorial Services, and dedicated Event Manager
- Basic Operations, Audio, LED Lighting and Backline (1 wireless microphone with plug-ins for DJ)

| | |
|-----------------------|--------------------|
| Total Estimate | \$11,500.00 |
|-----------------------|--------------------|

| Optional Add-on Fees | Fee |
|---|------------------|
| Access to self-guided touring of GRAMMY Museum | \$5,000.00 |
| Additional load-in hours | \$1,000/Hour |
| Hog 3 Full Boar Lighting Console with Lighting Director for programmable lights | \$1,000.00 |
| Projector Rental for Feature Wall | \$1,000.00 |
| Staging Dependent on Size | \$500-\$1,500.00 |
| 75-inch TV on stand x 2 (\$450/each) | \$900.00 |

CONTACT

EVENT SALES
213.725.5741

EVENTSALES@GRAMMYmuseum.org

FAQ

We are dedicated to bringing your event vision to life and are happy to answer any questions you have about our venue or next steps.



What if I have a large event footprint and would love to add space to my event?

The Ray Charles Terrace is on top of the GRAMMY Museum® and is available as an event space add-on to grow your event footprint and enhance your guest experience. Please reach out to your Event Manager for more information!



Is there on-site parking for guests/attendees?

We have multiple parking lots located at L.A. LIVE with flat rates up to \$40 depending on the event. You also have the option to pre-purchase parking validations for guests or arrange valet service for an additional fee.



Is the venue ADA friendly?

The entire building is ADA Accessible with two elevators at the VIP Entrance off Figueroa Street. In addition, there are ADA bar options and ADA stalls in the private restrooms.



Are there time restrictions for my event?

Timing of your event is up to you, however per the Downtown Los Angeles noise ordinance, all amplified music is regulated after 11:00 PM and must be turned down to an acceptable level.



What is required to book the space?

An Event License Agreement (ELA) will be issued upon client confirmation. It should be signed within two weeks of receipt along with the payment to confirm the space. An approved Certificate of Insurance (COI) will need to be provided seven days before the event date.



**WHERE EPIC
EVENTS HAPPEN**

THE RAY CHARLES TERRACE

ON THE ROOFTOP OF THE GRAMMY MUSEUM®

THANK YOU FOR YOUR INTEREST

Please note this proposal does not guarantee event date or hold status.
Please contact the Sales Manager for details.

